

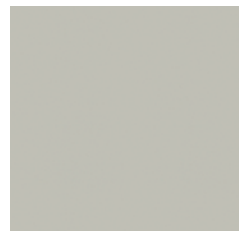


GA4 9090

GA4 9091

GA4 9092

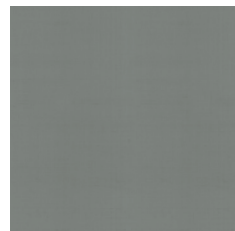
GA4 9093



GA4 9440



GA4 9441



GA4 9442

## Plain

### PRECIOUS FIBERS 2 - BOHÈME / FALSTAFF

Seven colours coordinated with Bohème and Falstaff themes. Silk and lurex yarns can create some slight variations on the surface, which must be considered a defining feature of the product. MADE IN ITALY.

#### DIMENSIONS

87 cm - Inch 34.2  
Vertical Repeat 0 cm - Inch 0

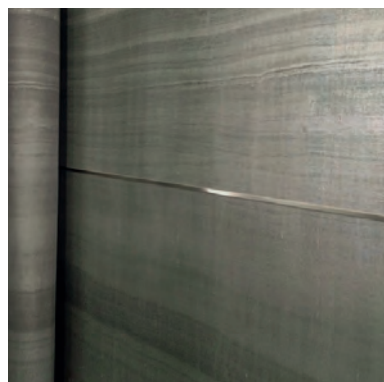
#### MATERIALS

68% SILK - 32% LUREX  
Non-woven base

## Profile

### PRECIOUS FIBERS 2

The Precious Fibers 2 collection offers the opportunity to enrich the wallcovering by adding a profile in anodized aluminium, available in two different widths (1 cm and 0,5 cm) for Nabucco - Bohème - Falstaff and one width only (1 cm) for Salomé.



**NABUCCO - PROFILE DIMENSION**  
Anodized Aluminium / Double-sided metal

9470 (Champagne)  
1h cm - Inch 0.30

9472 (Champagne)  
0,50h cm - Inch 0.20



**SALOMÉ - PROFILE DIMENSION**  
Anodized Aluminium / Double-sided metal

9470 (Champagne)  
1h cm - Inch 0.30



**BOHÈME - PROFILE DIMENSION**  
Anodized Aluminium / Double-sided metal

9471 (Silver)  
1h cm - Inch 0.30

9473 (Silver)  
0,50h cm - Inch 0.20



**FALSTAFF - PROFILE DIMENSION**  
Anodized Aluminium / Double-sided metal

9471 (Silver)  
1h cm - Inch 0.30

9473 (Silver)  
0,50h cm - Inch 0.20