

# MILANO

**CAT. D - TD071**

Waves are drawn on a silk satin background with a micro canneté pattern. The large scaled design continues without interruptions, granting undisturbed usage of the fabric. MADE IN ITALY.

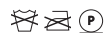


HALF WIDTH

**DIMENSIONS**

Width: 140 cm - Inch 55  
Repeat: 63 cm

**CARE**

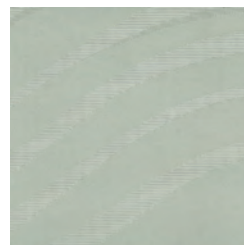


**COMPOSITION**

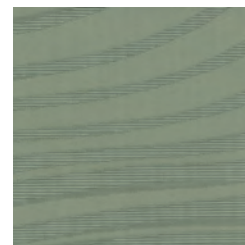
44%CO 35%AC 21%SE

**USE**

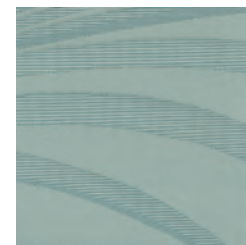
Light & decoration



TR868  
ICE



TR869  
GOLD



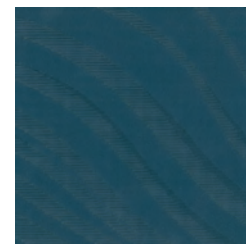
TR870  
ARCTIC BLUE



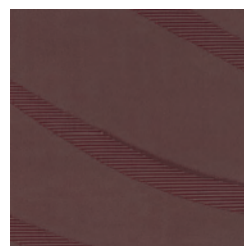
TR871  
SAGE



TR872  
AQUAMARINE



TR873  
STEEL BLUE



TR874  
ANTIQUÉ ROSE