

HERMITAGE

CAT. D - TD059

Hermitage is inspired by Baroque architecture. The striped design arises from the background in linen and metal yarns, in contrast with the clean and sleek satin. Not suitable for products requiring the piping. MADE IN ITALY.



HALF WIDTH

DIMENSIONS

Width: 140 cm - Inch 55
Repeat: 45 cm

CARE

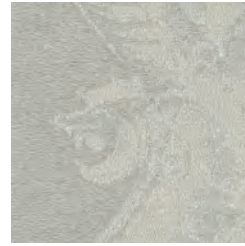


COMPOSITION

30%CO 28%LI 26%SE
9%VI 7%PM

USE

Regular



TR716
IVORY

HONOLULU

CAT. D - TD060

Ottoman fabric with large palm design, digitally printed to reproduce an ikat effect. Not suitable for products requiring the piping. The same design is featured on the Aida wallcovering. MADE IN ITALY.



FULL WIDTH

DIMENSIONS

Width: 140 cm - Inch 55
Repeat: 200 cm

CARE



COMPOSITION

53%LI 34%PA 13%CO

USE

Heavy



TR721
LIGHT BLUE/BEIGE



TR722
SEPIA