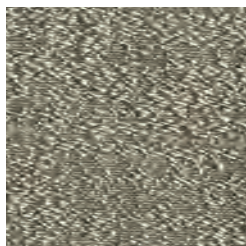
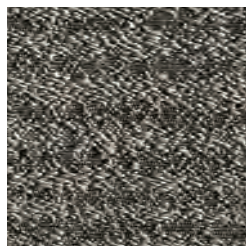


TR264  
IVORY



TR265  
PALE GOLD



TR266  
DOVE GREY

## DELIA

### CAT. D - TD042

Delia is a fabric in shantung silk, whose slubs give a dynamic movement to the surface.  
MADE IN ITALY.

#### DIMENSIONS

Width: 140 cm - Inch 55  
Repeat: 18 cm

#### CARE



#### COMPOSITION

39%AC 30%LI 21%SE 10%PC

#### USE

Regular



TR302  
IVORY



TR303  
GREY



TR304  
WATER GREEN

## DHAKA

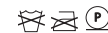
### CAT. D - TD039

Dhaka is a silk-base pleated fabric, whose distinctive three-dimensionality is attained through the raised motif.  
MADE IN ITALY.

#### DIMENSIONS

Width: 130 cm - Inch 51  
Repeat: -

#### CARE



#### COMPOSITION

74%SE 18%CO 8%PC

#### USE

Light & decoration



TR305  
OLIVE GREEN



TR306  
LIGHT BLUE