

## DOTHAN

### CAT. C - TC061

The Indian raw silk creates a typical irregular surface on this fabric.

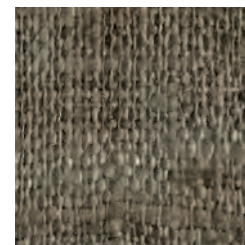
MADE IN ITALY.



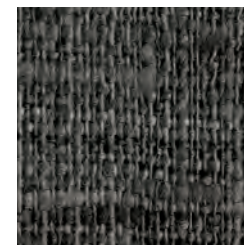
TR325  
IVORY



TR326  
SAND



TR327  
DOVE GREY



TR328  
ANTHRACITE GREY

### DIMENSIONS

Width: 135 cm - Inch 53

Repeat: -

### CARE



### COMPOSITION

100%SE

### USE

Light & decoration



TR329  
BROWN

## DUBOIS

### CAT. C - TC064

Dubois is a bi-elastic fabric exclusively available on the Baloon - Esther - Margot ranges.

MADE IN ITALY.



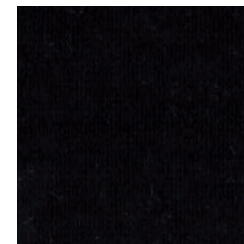
TR356  
ICE WHITE



TR357  
DOVE GREY



TR358  
DARK GREEN



TR2359  
BLACK

### DIMENSIONS

Width: 135 cm - Inch 53

Repeat: -

### CARE



### COMPOSITION

95%CO 5%EA

### USE

Heavy



TR360  
RED