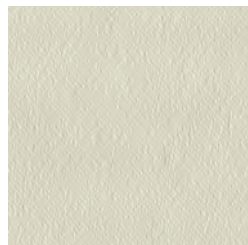
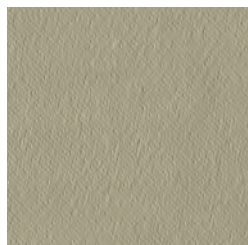




TR289
ICE WHITE



TR290
IVORY



TR291
PALE GOLD



TR292
SAND



TR293
DOVE GREY

DETROIT

CAT. B - TB051

Fine cotton satin made on the same looms traditionally employed for silk, to obtain a soft and flowing hand.
MADE IN ITALY.

DIMENSIONS

Width: 140 cm - Inch 55
Repeat: -

CARE

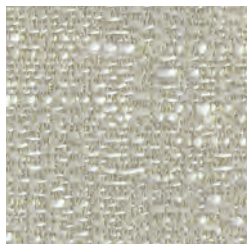


COMPOSITION

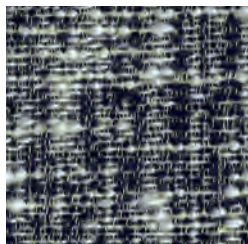
100%CO

USE

Heavy



TR330
BEIGE



TR331
GREY

DOUALA

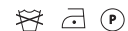
CAT. B - TB052

Douala is a fabric featuring a mélange-effect weave, with interrupted lines of strong visual impact.
MADE IN ITALY.

DIMENSIONS

Width: 135 cm - Inch 53
Repeat: -

CARE



COMPOSITION

46%CO 26%PA 24%PL 4%PC

USE

Regular